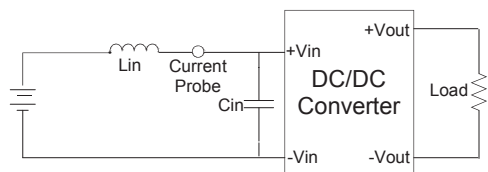




TEST CONFIGURATIONS

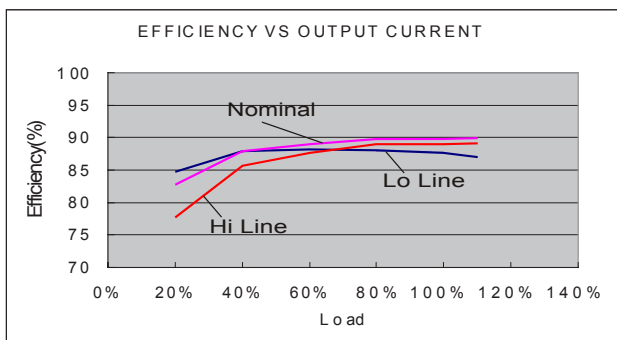
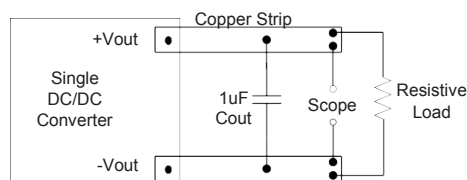
Input Reflected Ripple Current Test Step

Input reflected ripple current is measured through a source inductor L_{in} (12uH) and a source capacitor C_{in} (47uF, ESR<1.0@ at 100KHz) at nominal input and full load.

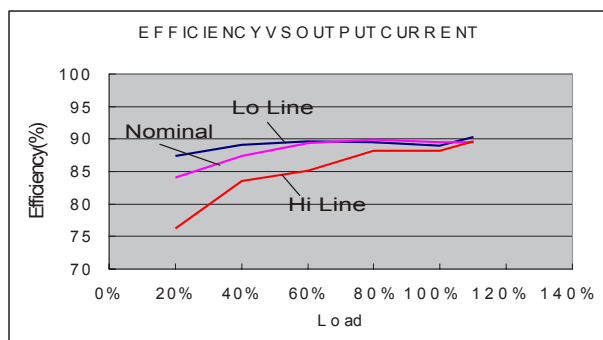


Output Ripple & Noise Measurement Test

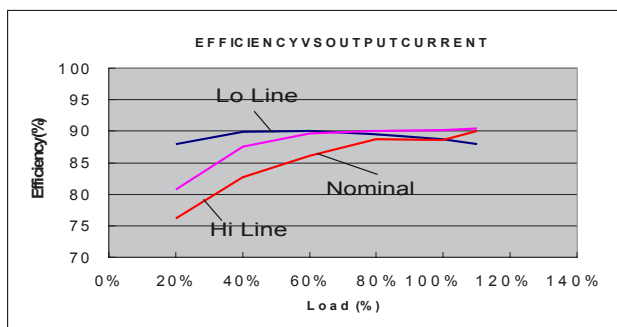
Use a capacitor C_{out} (1.0uF) measurement. The Scope measurement bandwidth is 0-20MHz.



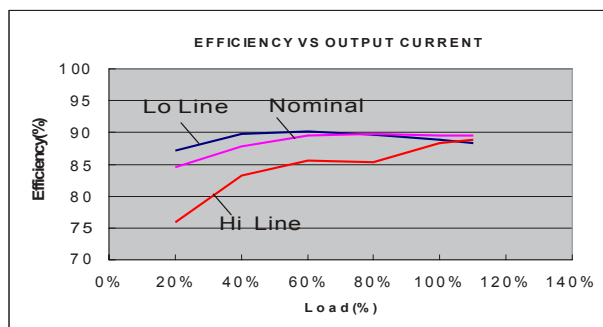
RR8-2405S12_W



RR8-4812S12_W

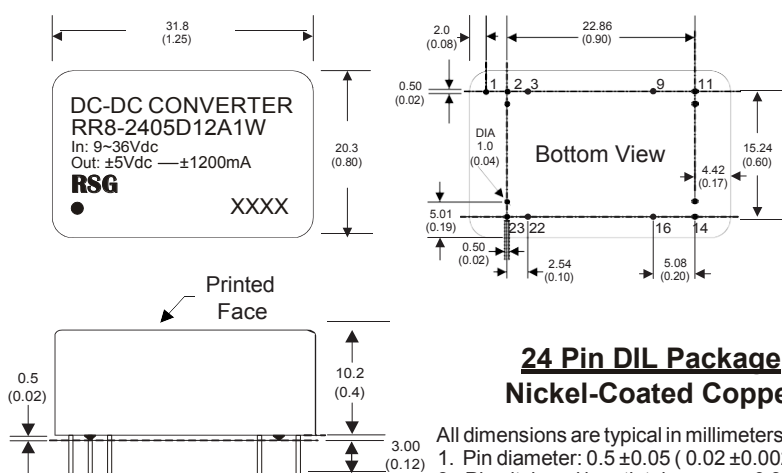


RR8-2412D12_W



RR8-4815D12_W

MECHANICAL SPECIFICATIONS



**24 Pin DIL Package
Nickel-Coated Copper**

- All dimensions are typical in millimeters (inches).
1. Pin diameter: 0.5 ± 0.05 (0.02 ± 0.002)
 2. Pin pitch and length tolerance: ± 0.35 (± 0.014)
 3. Case Tolerance: ± 0.5 (± 0.02)
 4. Stand-off tolerance: ± 0.1 (± 0.004)

PIN CONNECTIONS		
PIN NUMBER	SINGLE	DUAL
1	Remote On/Off	Remote On/Off
2	-V Input	-V Input
3	-V Input	-V Input
9	N.P.	Common
11	N.C.	-V Output
14	+V Output	+V Output
16	-V Output	Common
22	+V Input	+V Input
23	+V Input	+V Input

The models listed above are standard types. If you need special specifications or have questions regarding packing (Tube or Tape&Reel) or need application support, please contact our specialists: sales@rsg-electronic.de or +49 69-984047-0