

# RT1-S10DXv2

## SMD - DIP 8 Package

- Miniature SMD package
- Operating temperature range: -40°C to +105°C
- Isolation voltage: 1.5 or 3.0kVDC
- Internal surface mounted design
- No external component required
- International standard pin-out
- Continuous short-circuit protection

RoHS



RT1-xyyS10DXv2 series are specially designed for applications where an isolated voltage is required in a distributed power supply system. They are suitable when isolation between input and output is necessary (isolation voltage either 1500VDC or 3000VDC). Typical applications are digit circuit condition, normal low-frequency artificial circuit condition, relay drive circuit condition, etc.

### Model Selection Guide

Part No.	Input Voltage (VDC)	Output		Efficiency (% Min./Typ.) @ Full Load	Max. Capacitive Load (µF)
	Nominal (Range)	Output Voltage (VDC)	Output Current (mA)(Max./Min.)		
RT1-0303S10DXv2	3.3 (2.97-3.63)	3.3	303/30	65/69	220
RT1-0305S10DXv2		5	200/20	70/74	
RT1-0309S10DXv2		9	111/12	76/80	
RT1-0312S10DXv2		12	84/9	76/80	
RT1-0315S10DXv2		15	67/7	76/80	
RT1-0324S10DXv2		24	42/4	76/80	
RT1-0503S10DXv2	5 (4.5-5.5)	3.3	303/30	68/72	
RT1-0505S10DXv2		5	200/20	76/80	
RT1-0506S10DXv2		6	167/17	76/80	
RT1-0509S10DXv2		9	111/12	76/80	
RT1-0512S10DXv2		12	84/9	76/80	
RT1-0515S10DXv2		15	67/7	76/80	
RT1-0524S10DXv2	24	42/4	76/80		
RT1-1203S10DXv2	12 (10.8-13.2)	3.3	303/30	68/72	
RT1-1205S10DXv2		5	200/20	76/80	
RT1-1209S10DXv2		9	111/12	76/80	
RT1-1212S10DXv2		12	84/9	76/80	
RT1-1215S10DXv2		15	67/7	76/80	
RT1-1224S10DXv2		24	42/4	76/80	
RT1-1505S10DXv2	15 (13.5-16.5)	5	200/20	76/80	
RT1-1509S10DXv2		9	111/12	76/80	
RT1-1515S10DXv2		15	67/7	76/80	
RT1-2403S10DXv2	24 (21.6-26.4)	3.3	303/30	67/71	
RT1-2405S10DXv2		5	200/20	76/80	
RT1-2409S10DXv2		9	111/12	76/80	
RT1-2412S10DXv2		12	84/9	76/80	
RT1-2415S10DXv2		15	67/7	76/80	
RT1-2424S10DXv2		24	42/4	76/80	

Note: Suffix „X“ =  
1 for 1.5kVDC Isolation, 3 for 3.0kVDC Isolation

RT1-S10DXV2

Input Specifications					
Item	Operating Conditions	Min.	Typ.	Max.	Unit
Input Current (full load / no-load)	3.3V input	--	404/25	--/70	mA
	5V input	--	250/20	--/60	
	12V input	--	104/15	--/50	
	15V input	--	82/10	--/35	
	24V input	--	52/7	--/30	
Reflected Ripple Current		--	15	--	mA
Surge Voltage (1sec. max.)	3.3V input	-0.7	--	5	VDC
	5V input	-0.7	--	9	
	12V input	-0.7	--	18	
	15V input	-0.7	--	21	
	24V input	-0.7	--	30	
Input Filter		Filter capacitor			
Hot Plug		UnavailaRT1-le			

Output Specifications						
Item	Operating Conditions	Min.	Typ.	Max.	Unit	
Output Voltage Accuracy		See tolerance envelope graph (Fig. 1)				
Line Regulation	Input voltage change: $\pm 1\%$	3.3VDC output	--	--	$\pm 1.5$	--
		Other outputs	--	--	$\pm 1.2$	
Load Regulation	10%-100% load	3.3VDC output	--	18	--	%
		5VDC output	--	12	--	
		6VDC output	--	10	--	
		9VDC output	--	8	--	
		12VDC output	--	7	--	
		15VDC output	--	6	--	
24VDC output	--	5	--			
Ripple & Noise*	20MHz bandwidth	--	60	150	mVp-p	
Temperature Coefficient	Full load	--	--	$\pm 0.03$	%/°C	
Short Circuit Protection**	RT1-03XXS10D1WR/RT1-24xxS10D1WR/ RT1-0524S10D1WR	--	--	1	s	
	Others	Continuous, self-recovery				
Note: * Ripple and noise are measured by parallel cable method, please see DC-DC Converter Application Notes for specific operation; ** Supply voltage must be discontinued at the end of short circuit duration for RT1-S10D1WR series, and RT1-0524S10D1WR model.						

General Specifications					
Item	Operating Conditions	Min.	Typ.	Max.	Unit
Isolation Voltage	Input-output, with the test time of 1 minute and the leak current lower than 1mA	1500	--	3000	VDC
Isolation Resistance	Input-output, isolation voltage 500VDC	1000	--	--	M $\Omega$
Isolation Capacitance	Input-output, 100KHz/0.1V	--	20	--	pF
Operating Temperature	Derating if the temperature $\leq 100^\circ\text{C}$ (see Fig. 2)	-40	--	105	°C
Storage Temperature		-55	--	125	
Casing Temperature Rise	Ta=25°C, nominal input, full load output	--	25	--	
Pin Welding Resistance Temperature	Welding spot is 1.5mm away from the casing, 10 seconds	--	--	300	
Storage Humidity	Non-condensing	--	--	95	%RH
Reflow Soldering Temperature		Peak temp. $\leq 245^\circ\text{C}$ , maximum duration time $\leq 60\text{s}$ at $217^\circ\text{C}$ . For actual application, please refer to IPC/JEDEC J-STD-020D.1.			
Switching Frequency	Full load, nominal input voltage	--	100	--	KHz
MTBF	MIL-HDFK-217F@25°C	3500	--	--	K hours

STAND März 2017 Rev.01

RT1-S10DXV2

Physical Specifications	
Casing Material	Epoxy resin (UL94-V0)
Dimensions	12.70*11.20*7.25 mm
Weight	1.6g(Typ.)
Cooling Method	Free convection

EMC Specifications			
EMI	RE	CISPR22/EN55022	CLASS B (see Fig. 4 for recommended circuit)
EMS	ESD	IEC/EN61000-4-2	Contact ±8KV perf. Criteria B

Product Characteristic Curve

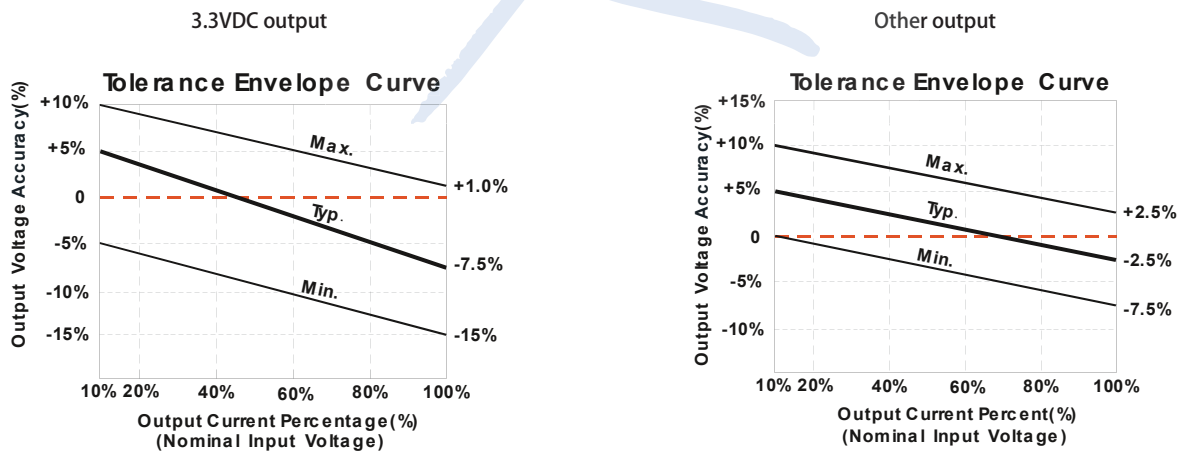


Fig. 1

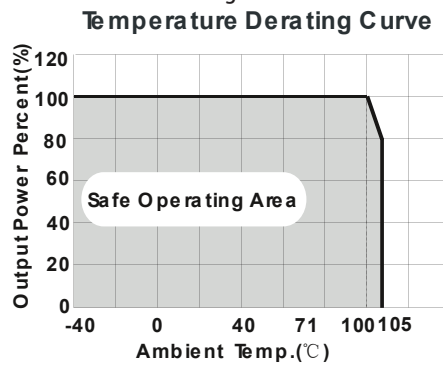
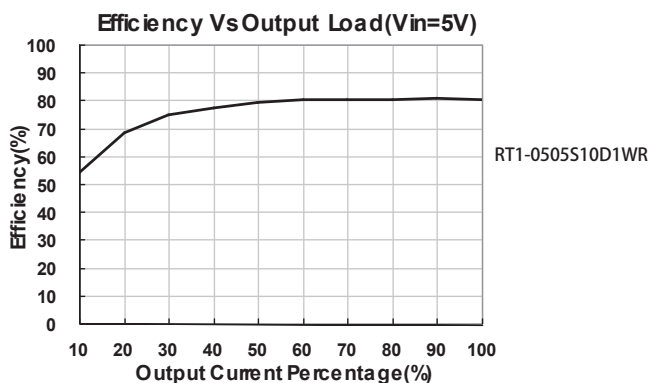
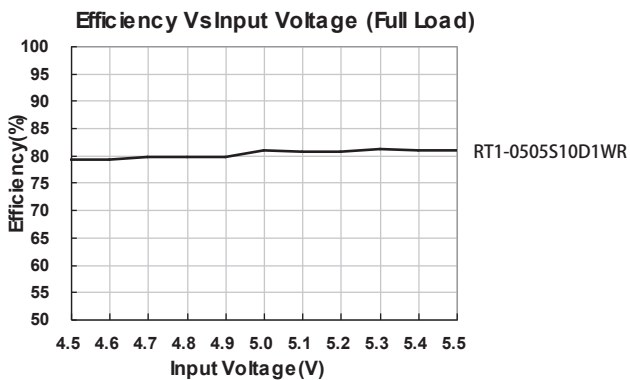
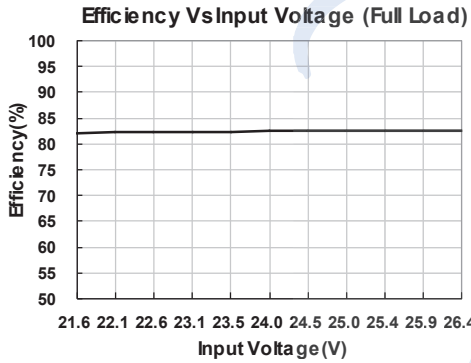


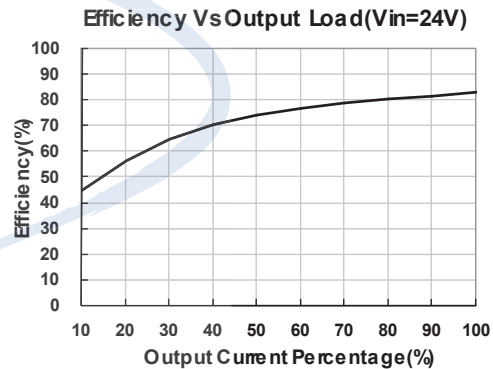
Fig. 2



RT1-S10DXV2



RT1-0505S10D1WR



RT1-0505S10D1WR

**DESIGN REFERENCE**

1. Typical application circuit

If it is required to further reduce input and output ripple, a filter capacitor may be connected to the input and output terminals, see Fig.3. Moreover, choosing a suitable filter capacitor is very important, start-up problems may be caused if the capacitance is too large. Under the condition of safe and reliable operation, the recommended capacitive load values are shown in Table 1.

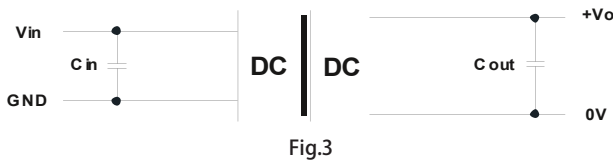


Fig.3

Recommended capacitive load value table (Table 1)

Vin(VDC)	Cin(μF)	Vo (VDC)	Cout(μF)
3.3	4.7	3.3	10
5	4.7	5/6	10
12	2.2	9	4.7
15	2.2	12	2.2
24	1	15	1
--	--	24	0.47

2. EMC solution-recommended circuit

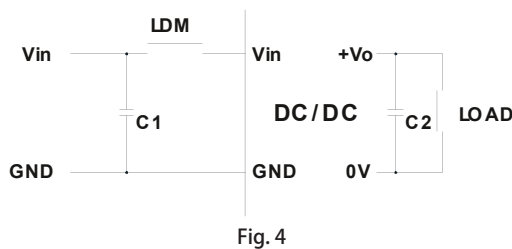


Fig. 4

Input voltage (VDC)		3.3/5/12/15/24
EMI	C1	4.7μF /50V
	C2	Refer to the Cout in Fig.3
	LDM	6.8μH

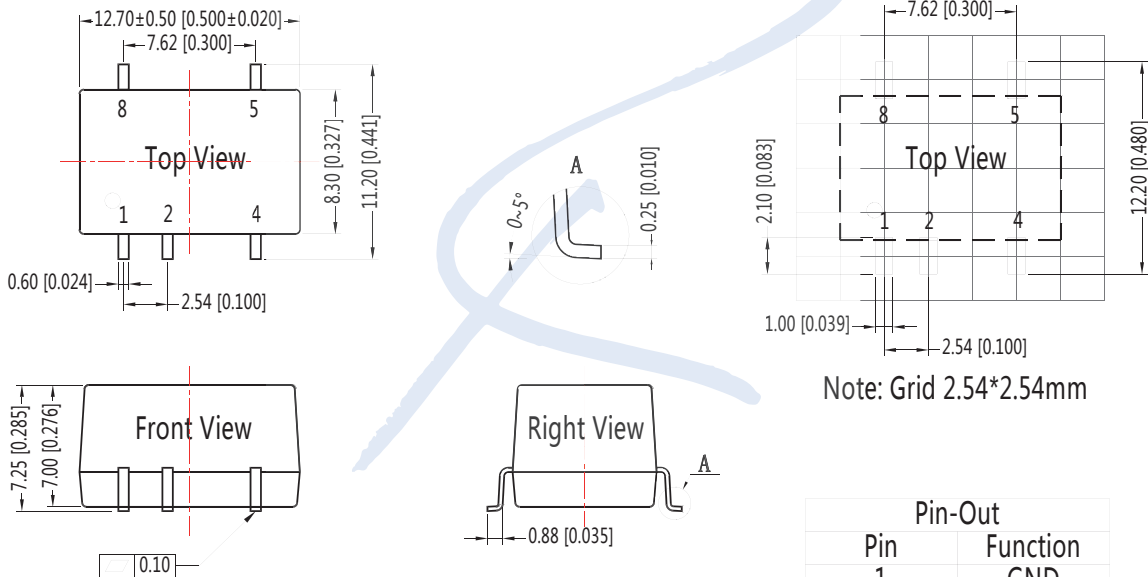
3. Output load requirements

When using, the minimum load of the module output should not be less than 10% of the nominal load. In order to meet the performance parameters of this datasheet, please connect a 10% dummy load in parallel at the output end, the dummy load is generally a resistor, Please note that the resistor needs to be used in derating.

Dimensions and Recommended Layout

RT1-S10DXv2

THIRD ANGLE PROJECTION



Note:  
Unit: mm[inch]  
Pin section tolerances:  $\pm 0.10[\pm 0.004]$   
General tolerances:  $\pm 0.25[\pm 0.010]$

Pin-Out	
Pin	Function
1	GND
2	Vin
4	0V
5	+Vo
8	NC

NC: No Connection

If the product is not operated within the required load range, the product performance cannot be guaranteed to comply with all parameters in the datasheet;

The maximum capacitive load offered were tested at nominal input voltage and full load;

Unless otherwise specified, parameters in this datasheet were measured under the conditions of  $T_a=25^\circ\text{C}$ , humidity<75% with nominal input voltage and rated output load;

All index testing methods in this datasheet are based on our Company' s corporate standards;

The performance parameters of the product models listed in this manual are as above, but some parameters of non-standard model products may exceed the requirements mentioned above. Please contact our technicians directly for specific information;

We can provide product customization service;

Specifications are subject to change without prior notice.

*The models listed here are just standard type. If you need a product with special specification or you have questions regarding packing standards (Tube oder Tape/Reel) as well as application support, please contact our specialists: sales@rsg-electronic.de or +49 69-984047-41/-28*