

# RR7-S05/D05

- 24 Pin DIL Package
- Wide 4:1 Input Range
- 1500VDC Isolation
- Up to 3500VDC Isolation
- Continuous Short Circuit Protection
- Efficiency up to 84%
- Operating Temperature Range  
-40° ~ +85°C
- Metal Case Standard , Optional Plastic Case
- EMI Complies With EN55022 Class A



RoHS

OUTPUT SPECIFICATION	ENVIRONMENTAL SPECIFICATION
Voltage accuracy: ±1%	Operating Temperature range: -40°C ~+85°C (see Derating Curve)
Line regulation: Single &Dual ±0.5% max.	Maximum Case Temperature: 100°C
LOAD REGULATION: ±0.5%	Storage Temperature : -40°C ~+125°C
Output 3.3V Model: ±1.5%	Cooling : Nature Convection
Short Circuit Protection : Indefinite (Automatic Recovery)	PHYSICAL SPECIFICATIONS:
Ripple noise (20Mhz bandwidth): 60mV pk-pk	Case Material: Nickel-coated Copper
Temperature coefficient: ±0.02% °C	Base Material: Non-conductive Black Plastic (UL94V-0 rated)
Capacitor load: See table	PIN Material: Ø 0.5mm Brass Solder coated
INPUT SPECIFICATIONS	Potting Material: Epoxy (UL94V-0 rated)
Voltage Range: See table	Weight Case-DIP: 17.0g ( Metal), 13.5g (plastic)
Max. Input Current: See table	Dimmension DIP: 1.25" x 0.8" x 0.4"
No-Load/Full-Load Input Current: See table	ABSOLUTE MAXIMUM RATINGS (1)
Input Filter: PI Type	Input Surge Voltage (100ms)/
Input Reflected Ripple Current : 35mA pk-pk	24V Models: 40VDC max.
GENERAL SPECIFICATIONS	48V Models: 80VDC max.
Efficiency: See table typ.	Soldering Temperature: 260°C max. (2)
I/O Isolation Voltage Metal Case (3 sec.): 1000VDC	EMC SPECIFICATIONS
I/O Isolation Voltage (3 sec.): 1500 ~ 3500VDC	Radiated-/Conducted Emissions: EN55022 Class A
I/O Isolation Capacitance: 500pF typ.	ESD: IEC 61000-4-2 Perf.Criteria A
I/O Isolation Resistance: 1000M Ohm	RS: IEC 61000-4-3 Perf.Criteria A
Switching Frequency: 266kHz, typ.	EFT: IEC 61000-4-4 Perf.Criteria A
Humidity: 95% rel H	SURGE: IEC 61000-4-5 Perf.Criteria A
Reliability Calculated MTBF : > 1.21Mhrs (MIL-HDBK-217 f)	CS: IEC 61000-4-6 Perf.Criteria A
Safety Standard: (designed to meet): IEC 60950-1	PFMF IEC 61000-4-8 Perf.Criteria A

1) These are stress ratings. Exposure of devices to any of these conditions may adversely affect long-term reliability.

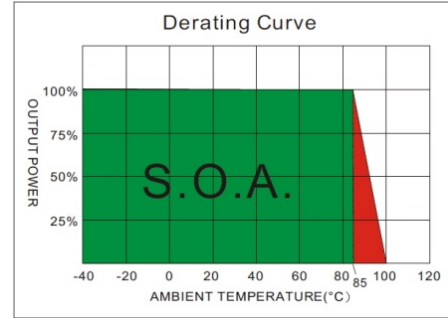
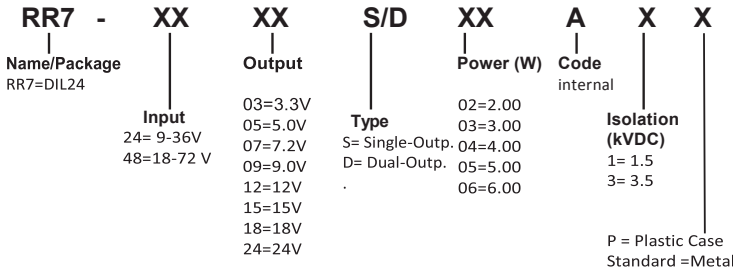
2) (1.5mm from case 10sec Max.)

3) All specifications typical at TA= 25°C, nominal input voltage and full load unless otherwise specified.

4) The information and specification contained in this data sheet are believed to be correct at time of publication. However RSG accepts no responsibility for consequences arising from printing errors or inaccuracies. Specifications are subject to change without notice.

RR7-S05/D05

**NUMBER STRUCTURE**



**MODEL SELECTION GUIDE**

MODEL NUMBER	INPUT Voltage Range (Vdc)	INPUT Current		OUTPUT Voltage (Vdc)	OUTPUT Current		EFFICIENCY @FL(%)	Capacitor Load(uF)
		No-Load (mA)	Full Load (mA)		Min. load (mA)	Full load (mA)		
RR7-2403S05AX	9-36	18	238.3	3.3	0	1300	75	1000
RR7-2405S05AX	9-36	18	260.4	5	0	1000	80	680
RR7-2407S05AX	9-36	18	260.4	7.2	0	694	80	470
RR7-2409S05AX	9-36	18	257.2	9	0	555	81	220
RR7-2412S05AX	9-36	18	254.1	12	0	416	82	100
RR7-2415S05AX	9-36	18	251	15	0	333	83	100
RR7-2418S05AX	9-36	18	260.4	18	0	277	80	68
RR7-2424S05AX	9-36	18	260.4	24	0	208	80	47
RR7-2403D05AX	9-36	18	281.5	±3.3	0	±757	74	±470
RR7-2405D05AX	9-36	18	260.4	±5	0	±500	80	±330
RR7-2407D05AX	9-36	18	260.4	±7.2	0	±347	80	±100
RR7-2409D05AX	9-36	18	257.2	±9	0	±277	81	±68
RR7-2412D05AX	9-36	18	254.1	±12	0	±208	82	±47
RR7-2415D05AX	9-36	18	254.1	±15	0	±166	82	±47
RR7-2418D05AX	9-36	18	260.4	±18	0	±138	80	±22
RR7-2424D05AX	9-36	18	260.4	±24	0	±104	80	±22
RR7-4803S05AX	18-72	15	119.2	3.3	0	1300	75	1000
RR7-4805S05AX	18-72	15	130.2	5	0	1000	80	680
RR7-4807S05AX	18-72	15	130.2	7.2	0	694	80	470
RR7-4809S05AX	18-72	15	128.6	9	0	555	81	220
RR7-4812S05AX	18-72	15	124	12	0	416	84	100
RR7-4815S05AX	18-72	15	125.5	15	0	333	83	100
RR7-4818S05AX	18-72	15	130.2	18	0	277	80	68
RR7-4824S05AX	18-72	15	130.2	24	0	208	80	47
RR7-4803D05AX	18-72	15	140.7	±3.3	0	±757	74	±470
RR7-4805D05AX	18-72	15	130.2	±5	0	±500	80	±330
RR7-4807D05AX	18-72	15	130.2	±7.2	0	±347	80	±100
RR7-4809D05AX	18-72	15	128.6	±9	0	±277	81	±68
RR7-4812D05AX	18-72	15	125.5	±12	0	±208	83	±47
RR7-4815D05AX	18-72	15	125.5	±15	0	±166	83	±47
RR7-4818D05AX	18-72	15	130.2	±18	0	±138	80	±22
RR7-4824D05AX	18-72	15	130.2	±24	0	±104	80	±22

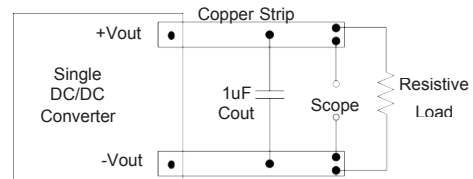
Suffix "3" means 3.5KVdc isolation  
Suffix "P" means Plastic case instead of standard Metal Case

STAND Juni 2016 Rev 01

1. Ripple/Noise measured with a 1uF ceramic capacitor.
2. Test by nominal input voltage and constant resistor load.
3. Measured Input reflected ripple current with a simulated source inductance of 12uH.
4. It's recommended to add (C1, C2, L) in input end to achieve EN55022 conducted Class A.
5. An external filter capacitor is required if the module has to meet IEC61000-4-5.  
The filter capacitor RSG suggest: Nippon - chemi - con KY series, 220uF/100V.
6. Exceeding the absolute ratings of the unit could cause damage. It is not allowed for continuous operating.

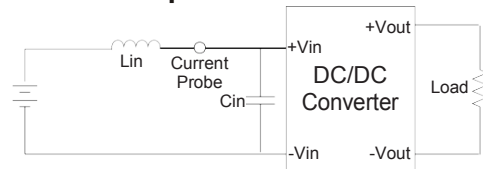
### Output Ripple & Noise Measurement Test

Use a capacitor Cout(1.0uF) measurement.  
The Scope measurement bandwidth is 0-20MHz.



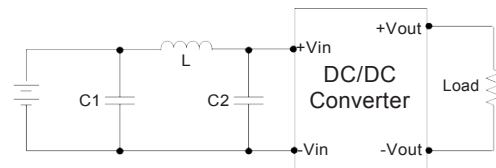
### Input Reflected Ripple Current Test Step

Input reflected ripple current is measured through a source inductor Lin(12uH) and a source capacitor Cin(47uF, ESR<1.0Ω at 100KHz) at nominal input and full load.

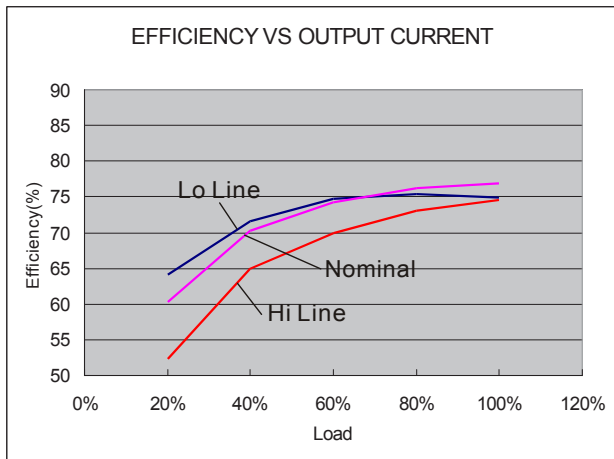


### EMI Filter

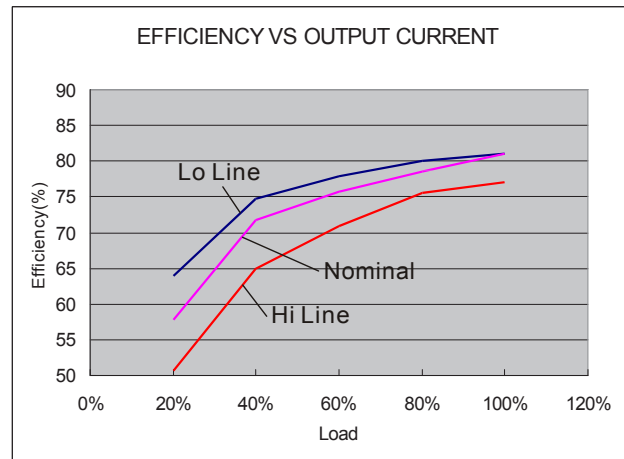
Input filter components (C1,C2, L) are used to help meet conducted emissions requirement for the module. These components should be mounted as close as possible to the module; and all leads should be minimized to decrease radiated noise.



C1	L	C2
68uF, 100V	12uH	33uF, 100V



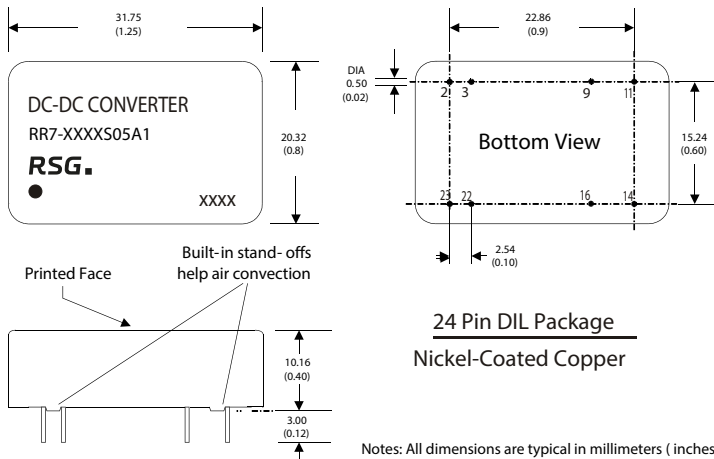
24 Models



48 Models

RR7-S05/D05

MECHANICAL SPECIFICATIONS

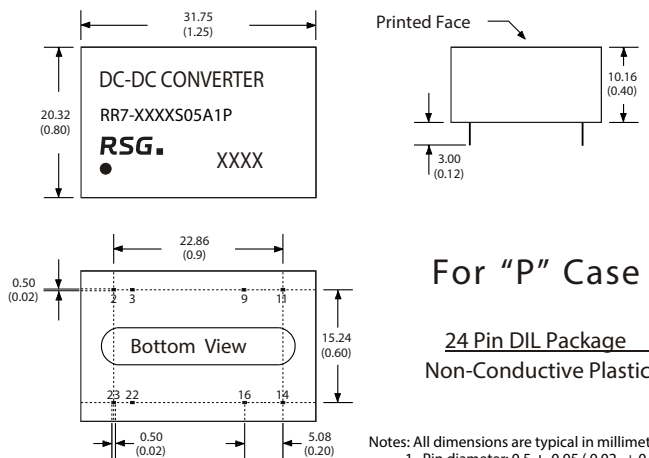


24 Pin DIL Package  
Nickel-Coated Copper

Notes: All dimensions are typical in millimeters ( inches ).  
1. Pin diameter:  $0.5 \pm 0.05$  (  $0.02 \pm 0.002$  )  
2. Pin pitch and length tolerance:  $\pm 0.35$  (  $\pm 0.014$  )  
3. Case Tolerance:  $\pm 0.5$  (  $\pm 0.02$  )

PIN CONNECTIONS		
PIN NUMBER	SINGLE	DUAL
2	-V Input	-V Input
3	-V Input	-V Input
9	N.P.	Common
11	N.C.	-V Output
14	+V Output	+V Output
16	-V Output	Common
22	+V Input	+V Input
23	+V Input	+V Input

(The Pin Connection of high isolation one is the same with normal one. )



For "P" Case

24 Pin DIL Package  
Non-Conductive Plastic

Notes: All dimensions are typical in millimeters ( inches ).  
1. Pin diameter:  $0.5 \pm 0.05$  (  $0.02 \pm 0.002$  )  
2. Pin pitch and length tolerance:  $\pm 0.35$  (  $\pm 0.014$  )  
3. Case Tolerance:  $\pm 0.5$  (  $\pm 0.02$  )

PIN CONNECTIONS		
PIN NUMBER	SINGLE	DUAL
2	-V Input	-V Input
3	-V Input	-V Input
9	N.P.	Common
11	N.C.	-V Output
14	+V Output	+V Output
16	-V Output	Common
22	+V Input	+V Input
23	+V Input	+V Input

(The Pin Connection of high isolation one is the same with normal one. )

The models listed here are just standard type. If you need a product with special specification or you have questions regarding packing standards (Tube oder Tape/Reel) as well as application support, please contact our specialists: sales@rsg-electronic.de or +49 69-984047-41/-28